

# CITY CURRENTS



VOLUME 7 NO. 4

OCTOBER 1996

## Tony Piasecki is new Assistant City Manager

**T**ony Piasecki joined the staff at City Hall in August as the new Assistant City Manager. Piasecki takes the position vacated by Bob Olander when he was appointed City Manager last February.

Piasecki, 36, comes to Des Moines from Phoenix, Arizona, where he was the customer service administrator with the city water department for several years. Previously, he was an assistant in the city manager's office in Phoenix. He holds a masters degree in public affairs from the University of Texas.

Piasecki said he applied for the Des Moines position because he liked the size of the city, and he and his wife are "outdoors people" and they were attracted to this part of the country. He said his career goal is to become a city manager and being an assistant manager in Des Moines is a logical step in that direction.

His first impression of Des Moines was that it feels like a small town with a strong sense of community. At city hall, he immediately sensed a team-oriented approach among the staff. "They all seem to have a lot of energy, enthusiasm and commitment to serve the public," he said.

Piasecki said his goal in Des Moines is to help improve the quality of life. "I want to be able to say I've made a difference in the lives of the people who live here. I'm very serious about that."



Tony Piasecki



Young people have been crowding to the skateboard park since it opened Sept. 5

## Skateboard park is a hit with youth

**D**es Moines' new skateboard park at Des Moines Field House Park has been a popular spot since it opened in September. Crowds of young people have been there regularly testing out the ramps, platforms and other obstacles with their skateboards and in-line skates.

Opening day Sept. 5 attracted about 125 skateboarders and in-line skaters to the park. The dedication ceremony held that evening was attended by about 300 people. Following a few short speeches, Des Moines City Councilmembers tried their luck negotiating the obstacles on skateboards and in-line skates.

The skateboard park came about after a group of youths complained to the City Council that there were no places in the City to legally ride their skateboards. A committee of staff members and youths was formed to

examine possible solutions, including building a skateboard park.

Jess Holbrook, 16, was one of the youths who first approached the Council, helped gather 4,000 signatures on a petition for the park, and once the concept of a skateboard park was approved by the Council, helped design it.

Jess said the park turned out just as they had planned. "It's really good. All of us locals are down there just about every day. We're really happy to have a park to skate in instead of the street."

### SEE INSIDE:

- Runway Fight .....page 2
- Crime Prevention .....page 3
- Haunted House .....page 4
- Looking Back .....page 5
- Collection Event .....page 6

**DES MOINES  
DIRECTORY**

City Hall, 21630 11th Ave. S.  
878-4595

Business Hours: Monday - Friday  
8 a.m. - 4:30 p.m.

**City Council - 878-4595**

Scott Thomasson, Mayor  
Terry Brazil, Mayor Pro Tem  
Bruce Roberts  
Bob Sheckler  
Dan Sherman  
Gary Towe  
Don Wasson

**City Offices**

City Attorney .....878-4595  
City Clerk .....878-4595  
City Manager .....870-6541  
Community Development .878-8626  
Engineering .....878-8626  
Finance Director .....878-4595  
Marina .....824-5700  
Municipal Court .....878-4597  
Parks .....870-6556  
Police Department .....878-3301  
Public Works .....870-6559  
Recreation .....870-6527  
Senior Services .....878-1642

**Other Numbers**

Emergency .....911  
Fire (non-emergency) ...878-2210  
Police (non-emergency) .878-3301  
Field House .....870-6527  
Library .....824-6066  
Marina .....824-5700  
Senior Center .....878-1642

**Licenses due for pets  
and businesses by Jan. 1****Dog Licenses:**

- \$10 (Must have Vet's Proof of Current Rabies Vaccination)
- \$20 Lifetime Sr. Citizen (65 years old)

**Business Licenses:**

- Home Occupation - \$20
- General Commercial - \$50
- Rental of Real Property - \$50 Plus a Per Unit Fee

Please call the City Clerk's office,  
878-4595, for application forms or  
for more information.

**AIRPORT COMMUNITIES COALITION****3rd runway fight enters legal arena****By Ken Reid**

Executive Director,  
Airport Communities Coalition  
(Cities of Des Moines, Normandy Park,  
Burien, Tukwila, Federal Way and Highline  
School District)

On August 2, the day after the Seattle Port Commission adopted its airport master plan and authorized construction of the third runway, the Airport Communities Coalition (ACC), of which Des Moines is a charter member, filed the first of its legal challenges.

Filed in King County Superior Court and naming the Puget Sound Regional Council (PSRC) and the Port of Seattle (Port) as defendants, this first challenge contains 17 claims that the PSRC's process to amend its Metropolitan Transportation Plan (MTP) was fatally flawed in three general categories. (In a nearly identical filing, the ACC on September 9 lodged an appeal before the state's Growth Management Hearings Board.)

First, the PSRC and the Port violated key provisions of the state's Growth Management Act (GMA) and the State Environmental Policy Act (SEPA), which require consistency with local comprehensive plans, credible financial plans and consideration for protecting the integrity of the region's surface transportation system.

Second, the required environmental studies conducted all ignored the devastating effects on the quality of life in the region and South King County by failing to adequately study and disclose the extent of impacts on air quality, water quality, noise levels, land uses and the roadway network.

And, finally, the PSRC violated state law and its own rules and procedures when it ignored the findings and recom-

mendations of its own consultants, committees and panels, specifically regarding the supplemental airport search and noise reduction.

Then, on August 13 the ACC launched its second legal attack. An administrative appeal was filed challenging the legal adequacy of the Port's Environmental Impact Statement (EIS) under SEPA. The ACC challenged the Port's failure to accurately analyze the impacts of mining, transporting and placing the huge volumes of fill required to construct the runway, and also its failure to identify and evaluate feasible alternatives and reasonable mitigation measures. (The City of SeaTac has filed a separate but similar administrative appeal with the Port.)

Port SEPA rules require that challenges to Port decisions be brought before their newly created Office of the Hearing Examiner. The hearing examiner is appointed by, and the appeals process is conducted in accordance with rules established by, the Port. At this writing, two separate hearing examiners have been disqualified (at least in part due to challenges lodged by both the ACC and the City of SeaTac) because of conflict and appearance of fairness issues. As a result, the specific appeal schedule is undetermined. It should conclude within about six months, though, but can later be appealed to the courts.

The ACC has asked the court and the hearing examiner to overturn prior decisions and order the Port to cease all further actions pursuing the third runway and related expansion of Sea-Tac Airport. ACC has not yet requested any injunctions, stays or restraining orders, but is prepared to do so if it becomes necessary.





# CRIME PREVENTION

## Property Crime Statistics

There has been a dramatic decrease in burglaries reported during the period from June 1 to September 1: 44 burglaries compared to the 76 burglaries that were reported from March 1 to June 1 this year. Auto theft statistics have remained fairly constant, with the increase in crime during this reporting period being in reports of theft from auto.

The key to reducing any property crime statistic, especially theft from auto, is good common sense. Too many times victims of theft from auto create enticing opportunities for criminals. Wallets, purses, cell phones, money, keys, and garage door openers are left in plain view in the vehicle, both day and night. Women attending events at the high school, or taking a walk around the marina, stash their purses in their car trunks in plain sight of anyone watching. Pull-out stereos are left in vehicles routinely. Many insurance companies will not cover the theft of a pull-out stereo if it is left inside the vehicle.

Most theft from auto occurs during

the night, but a good rule of thumb is to make sure nothing is left in your vehicle at any time.

JUNE 1 TO SEPTEMBER 1, 1996

- 71 reported incidents of malicious mischief. (Malicious mischief is any type of property damage).
- 108 reported incidents of theft from auto
- 39 reported auto thefts
- 44 reported incidents of burglary to either homes, apartments, storage sheds or businesses.

## Postal Alert Program

The postal alert program is available for seniors (55 years and older), disabled, and extreme Med-alert persons. The U.S. Postal Service, City of Des Moines Police, City of SeaTac Police and the King County SeaTac Police Department are jointly offering this free service.

The forms for signing up on this program are available at the Des Moines Post Office, the Riverton Heights Post Office, the North SeaTac Community Center and the Des Moines Senior Center. Once a participant has filled out the form they can either leave it in their

mail box for their mail carrier to pick up, or mail it to their local post office.

The program is very simple. It requires that participants provide information for at least one emergency contact person. They must also notify both the emergency contact and the post office if they will not be home for several days in a row. If mail accumulates in the participant's mail box for a period of two to three days, and they have not notified the post office that they will be gone, the mail carrier will contact the police to check on their welfare. If the participant is injured, or seriously ill, the officer can take appropriate action. It is very important to make sure the emergency contact person knows the participant's whereabouts, as this is who the police will contact to get permission to enter the home.

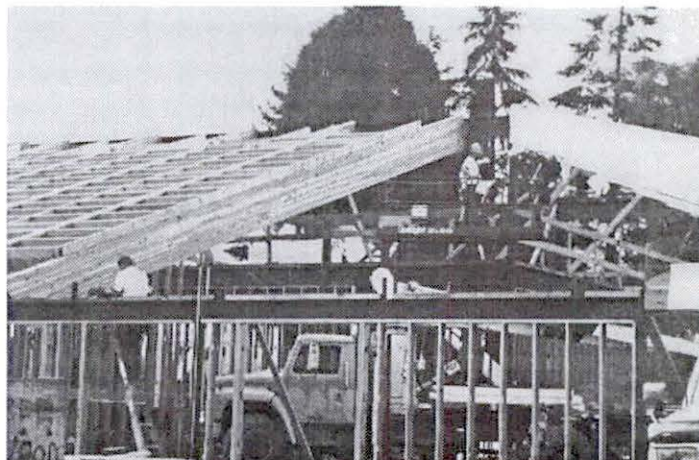
Many elderly and disabled people live alone, with no family or friends nearby to check on their welfare. If you know anyone that would benefit from this program, please make a point of letting them know about it. If you have any questions, please feel free to contact Officer Shelley Miell at the Des Moines Police Dept. at 870-6536.

## New police station on schedule for a spring 1997 opening

Des Moines' new police station is taking shape quickly, as passersby on 11th Avenue South have surely noticed. Lt. Kevin Tucker, police spokesman, said the overall project is about 25 percent complete, and on schedule for its spring 1997 completion.

"Most of the exterior work is being done in the fall; the roof should be water-tight by the end of September," Tucker said. He said that work on sidewalks and lighting will be conducted next, before work moves inside the structure during the winter months.

"We've been very pleased with the work of the contractor, and the architect is pleased too. It's going very well," he said. The contractor is Shinstine & Associates of Sumner. The project is being funded through a \$3.35 million bond issue approved by Des Moines voters in April of 1995.



The new police station on 11th Avenue South is quickly taking shape.

## Grant provides support, education of victims of domestic violence

Until recently, a victim of domestic violence in the City of Des Moines didn't receive much in the way of help in breaking the cycle of domestic violence.

Thanks to funding from the federal Department of Justice, Des Moines is now able to offer victims of domestic violence help in the form of support, education, and resources.

The \$177,537 grant will fund officer training specific to domestic violence response and equipment for processing a domestic violence crime scene. Further, one full-time court advocate will be hired to assist the victim through the court process, and a half-time victim's advocate will be hired to assist a victim in using resources in the community such as legal aid and professional counseling. The court and victim's advo-

cates should be on board in the Police Department by mid-October. The victim in every domestic case reported to police will be contacted.

The grant will also fund a mobile outreach unit which will go out into the community to stores and shopping mall parking lots where victims can seek help in anonymity.

No longer will victims of domestic violence have to go through their battle against domestic abuse alone. With the help of law enforcement, the judicial system, and the Domestic Abuse Women's Network, victims will have the support, education, and resources available to them to break the cycle of domestic violence and rebuild a healthy life, free from abuse.

For information, contact the Police Department at 878-3301.

## Port of Seattle cancels plan to develop technology campus in Des Moines

The Port of Seattle has dropped plans to develop the Des Moines Creek Technology Campus on 90 acres north of South 216th Street and 24th Avenue South, an area of the City impacted by noise from Sea-Tac Airport.

The campus was to be home to Cell Therapeutics, a drug-manufacturing firm that would have employed up to 200 people in a 175,000 square-foot facility. The Port had acquired the 90 acres over the years as it bought out noise-impacted property owners near the airport.

The Des Moines City Council in May approved a rezone and master plan for the technology campus. City staff has worked with the Port for more than two years on planning for the technology campus, much of that time negotiating project mitigations with the Port.

The Port stated in its decision to drop the project that project mitigations required by the City have made it economically unfeasible to proceed.

The City required the Port to conduct major street and storm water detention improvements, and give the City a 14-acre parcel in exchange for vacating some streets. The City planned to develop the 14 acres into a sports park.

Des Moines City officials were disappointed at the Port's decision not to develop the technology campus, since City staff had spent a great deal of time on the project, and it was a good use of land that has been made uninhabitable by aircraft noise.

*City of Des Moines  
home page  
address:*

<http://www.ci.des-moines.wa.us>



## Haunted House opens October 16

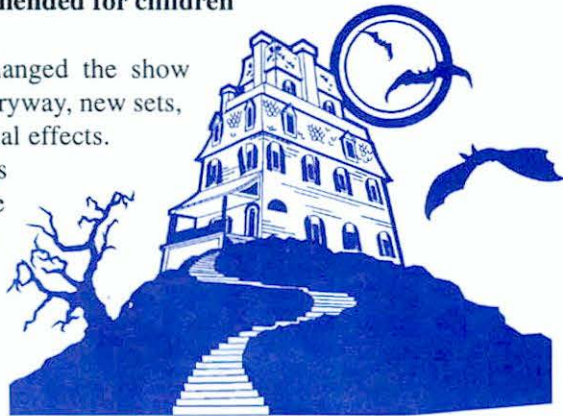
The annual Des Moines Haunted House opens October 16 and runs through Halloween night, October 31.

The Haunted House is at Des Moines Beach Park, north of the Des Moines Marina. Hours are 7 to 10 p.m. Sunday - Thursday; 7 to midnight Friday and Saturday. Admission is \$5 per person. Discount coupons for \$1 off admission Sunday - Thursday are available at Bartell Drugs.

A special "Family Hour", during which the special effects are toned down for younger children, is held each night from 7 to 8 p.m. The Haunted House is **not recommended for children under age 7.**

Scare Productions has changed the show this year, with a new front entryway, new sets, new characters and new special effects.

The Haunted House is sponsored by Scare Productions, the City of Des Moines and the Des Moines - Midway Rotary Club. The Rotary Club uses proceeds to fund community service projects.





# YOUR COMMUNITY SOCIAL SERVICE DIRECTORY

City of Des Moines  
October, 1996

## EMERGENCY NUMBERS

Coast Guard (Search & Rescue)	220-7255	King County Sheriff	911
Community Information (8-5 M-F)	461-3200	Poison Center	1 800 732-6985
Crisis Line	461-3222	Police	911
FBI - Seattle	622-0460	Suicide Prevention	1 800 422-2552
Fire	911	Washington State Patrol	464-6610

## ABUSE

Adult Protective Services (seniors-disabled adults-legally incompetent)	587-5620
Catherine Booth House (Shelter)	324-4943
Child Protective Services (24 hour)	721-4115
Domestic Abuse Women's Network/DAWN (shelter and information)	656-7867
Domestic Violence Hotline	1 800 562-6025
Nursing Home Patient Abuse & Neglect	1 800 562-6078
Seattle Rape Relief	632-7273
Sexual Assault Resource Center	226-5062
or	1 800 825-7273

## ANIMAL CONTROL

24-Hour Emergency Vet (5 Corners Vet)	246-1211
Des Moines Police/Animal Control Division	870-6549
HOWL/PAWS	787-2500
King County Animal Control Shelter	296-7387
Pet License - King County	1 800 321-6565
Des Moines	878-4595
Washington State Dept. of Fish & Wildlife	775-1311

## ALCOHOL / DRUGS / ANONYMOUS

Adult Children of Alcoholics	1 800 562-1240
Al-Anon Information Service	625-0000
Alcoholics Anonymous	587-2838
Grace Lutheran (AA Group)	878-2460
Alcohol and Drug 24-hour Help Line	1 800 562-1240
Catholic Community Services-Counseling	325-5162
Debtor's Anonymous	722-6117
Evergreen Treatment Services	223-3644
Focus on Recovery	722-6117
Gamblers Anonymous	464-9514
Highline Recovery Services	242-2260
King County Div. of Alcoholism & Substance Abuse	296-7615
Moms Against Violence in America	878-2912
Moms Project (DSHS) (pregnant women)	721-2888
Mothers Against Drunk Driving	364-3233
Narcotics Anonymous (South Puget Sound)	872-3494
Salvation Army Adult Rehabilitation Center	587-0503
South King County Drug & Alcohol Recovery Center	242-3506
Teen Line (referral & crisis counseling)	1 800 562-1240
Western Clinical Health Service - Federal Way out-patient drug treatment	874-2030

## AREA SERVICES AND UTILITIES

Fire District No. 26	878-2210
Hazardous Waste Disposal	296-4692
Highline Water District	824-0375
Midway Sewer District	824-4960
Puget Sound Power & Light	1 800 321-4123
Sea-Tac Disposal	682-9730
TCI Cable	433-3401
US Post Office	824-6191
Washington Natural Gas	622-6767
Water District No. 54	878-7210

## CHAMBER OF COMMERCE

Greater Des Moines - 22236 Dock S.	878-7000
------------------------------------	----------

## CHILD SERVICES

Child Care Resources	852-3080
Child Find (Development Assessment)	433-2557
Child Protective Service	872-2665
Children Grieve Too	246-6142
FamilyLife Services	878-4550
Federal Way Youth Service Bureau (youth counseling)	839-6555
Highline Head Start	762-6070
Early Childhood Education Asst. Program	439-6906
Kidlets (licensed daycare information)	824-3614
Pregnancy Aid	878-3770
Ruth Dykeman Children's Center (emotionally impaired youth, Burien)	242-1698
Sexual Assault Resource Center (24-hour intervention & referral, support)	226-5062
or	1 800 825-7273
WIC (Women, Infant & Children)	870-8190

## CHURCHES

Assembly of God of Des Moines	878-4063
Christian Faith Center	824-8188
Crossroads Assembly	244-5612
Des Moines Foursquare Church	824-7001
Des Moines Gospel Chapel	878-2145
Des Moines United Methodist Church	878-8301
First Baptist Church of Des Moines	878-3972
Grace Lutheran Church	878-2460
Lutheran Church of the Resurrection	824-2978
Marcus Whitman Presbyterian Church	878-2013
Midway Community Covenant Church	878-4861
Mission to Unreached Peoples	824-7550
Normandy Christian Church	878-8740
Resurrection Lutheran Church	824-2978
St. Philomena Catholic Church	878-8709
Seventh-Day Adventist Churches	246-0472
Sound View Baptist Church	878-5050
Southminster Presbyterian	878-8133
Trinity Church	878-7433
Unitarian Church of Des Moines	839-5200
Victory Baptist Church	824-2080

## CITY OF DES MOINES

Building Dept.	878-8626
City Hall	878-4595
TDD	824-6024
Community Development	878-8626
Courts - Municipal	878-4597
Marina	824-5700
Parks	870-6527
Police (other business—voice and TDD)	878-3301
Public Works	878-8626
Recreation	870-6527
Senior Center	878-1642
Surface Water Management	824-7447

## CLOTHING

Clothing Bank (Midway Covenant Church)	878-4861
Pregnancy Aid (Maternity and Infant wear)	878-3770
South King County Multi Service Center	838-6810

## CONSUMER AFFAIRS

Better Business Bureau	431-2222
TDD	448-6237
Cable Customer Service (Des Moines)	833-8380
Consumer Credit Counseling Service	545-4300
King County Cooperative Extension	296-3900
King County Office of Citizen Complaints	296-3452
US Consumer Product Safety Commission	553-5276
US Federal Information Center	1 800 726-4995
WA State Utilities & Transportation	1 206 753-1279
Washington State Attorney General	
Consumer Line	464-6811
Safety and Health	281-5470
Welfare Rights Organization Coalition	324-3063

## EDUCATION

Adult Literacy (Highline Community College)	878-4710
Education Resource Center for Handicapped	362-2273
Highline Community College	878-4710
Highline School District	433-0111

## EMERGENCIES / ACCIDENTS

Highline Community Hospital	244-9970
Nurse Health Information (24 hour)	246-8773
Poison Center	526-2121
U.S. Veteran's Affairs Medical Center	762-1010

## EMPLOYMENT

Highline Community College/Work Force Train.	878-3710
Industrial Skills (sheltered employment and training)	852-3650
Private Industry Council	591-5450
SKCAC Industries (sheltered employment)	395-1240
South King County Jobs (WA State)	872-6330
Senior Community Service Employment	735-3938
Vocational Rehabilitation (DSHS)	
Federal Way	872-2722
Burien	433-1312
Washington Women's Employment & Education	859-3718

## ENVIRONMENTAL PROTECTION

Hazardous Substance Information	1 800 633-7585
Recycling Information	1 800 732-9253

## FOOD BANK

Des Moines Area Food Bank	878-2660
---------------------------	----------

## FOOD AND MEALS

Des Moines Area Food Bank	878-2660
Des Moines Police Chaplain's Fund	878-3301
Des Moines Senior Center	
(hot lunches / Meals on Wheels)	878-1642
Emergency Feeding Program (referral)	723-0647
Food Stamp Information (Social Security Number and Picture ID required)	
Burien	433-1336
Federal Way	872-2703
Meals on Wheels for Seniors	878-1642
Northwest Harvest (information & referrals)	625-0755
St. Vincent De Paul	623-1695
Salvation Army	946-7933
WIC (Women, Infant & Children)	870-8190

## HEALTH / DENTAL

Easter Seal (dental referrals for disabled)	281-5700
Puget Sound Neighborhood Health Centers	
(dental clinics for low income)	461-6935
Seattle/King County Dental Society	
(low income, seniors, referral only)	443-7607
Seattle/King County Public Health Dept.	
Dental clinic referral	296-4620
Senior Info & Asst. (60+ referrals)	448-3110
United Cerebral Palsy (Dental clinic)	633-6725
University of Wash. (School of Dentistry)	543-5830

**HEALTH / DISABILITIES**

ARC of King County (Developmental)	364-1613
Birth to 3 Developmental Center	874-5445
Children's Therapy Center	854-5660
Community Service Center for the Deaf & Hard of Hearing	322-4996
Community Services for the Blind & Partially Sighted	525-5556
Community Visionaries (parents of children with special needs)	854-6027
Deaf Blind Service Center	323-9178
Developmental Disabilities (state agency)	720-3300
Disability Parking Permit Application	931-3935
Easter Seal Society of Washington	281-5700
Highline Hospital Speech & Hearing Center	246-8677
Hope Clinic (learning disabilities treatment)	242-5414
Lifetime Advocacy Plus (trusts, payee)	367-8055
Multiple Sclerosis Association	461-6914
Muscular Dystrophy Association	283-2183
Northwest Paralyzed Veterans of America	241-1843
Resource Center for Handicapped	271-0587
United Cerebral Palsy Association	363-7303
WA Coalition of Citizens with Disabilities	461-4550
Washington Protection & Advocacy	1 800 562-2702
Washington State Services for the Blind	721-4422
WA Talking Book & Braille Library	1 800 542-0866

**HEALTH / HOSPICE / IN HOME CARE**

Catholic Community Service Homecare	322-3637
Community Home Health Care	282-5048
Evergreen Community Health Services	246-8048
Home Health Agency and Hospice	439-9095
Hospice of Seattle	320-4000
Visiting Nurses Services of the NW	548-8100

**HEALTH / MENTAL**

Catholic Community Services	854-0077
Community Home Health Care (in home)	282-5048
Family Services, South County Branch	854-8705
Highline Counseling Center	243-5229
Highline West Seattle Mental Health	241-0990
Lutheran Social Services	735-9392
Presbyterian Counseling	527-2266
Valley Cities Counseling & Consultation	833-7444
Washington Advocates for Mentally Ill	
Crisis	783-9264
Business	789-7722

**HEALTH / RESOURCES**

24-Hour Nurse	246-8773
AIDS—Seattle King County Public Health	
AIDS Prevention Project	296-4999
Alzheimer's Association of Puget Sound	365-7488
American Cancer Society	283-1152
American Diabetes Association	1 800 848-7097
American Heart Association	632-6881
American Lung Association	1 800 732-9339
American Red Cross	323-2345
Arthritis Foundation	1 800 542-0295
Basic Health Plan	1 800 826-2444

**HEALTH / RESOURCES (Cont'd)**

Cancer Information (24 hour)	461-4542
CPR Training (Medic II, Free)	878-2210
Christian Faith Counseling Center	878-2000
Community Health Centers (sliding fee)	
Federal Way	874-7633
Community Health Referral Program	284-5291
Compassionate Friends (Parents/Grand-Parents who lost child/grandchild)	246-6142
Dept. of Social & Health Services (DSHS)	
Burien	433-1336
Epilepsy Association	286-4440
Health Information Network (sexually transmitted disease information)	784-5655
Highline Hospital	244-9970
King County Medical Society	621-9393
Medicare	1 800 772-1213
Northwest Kidney Foundation	292-5351
Optometric Center (low income & seniors, exams and glasses)	325-1100
Planned Parenthood	839-2740
Pregnancy Aid	878-3770
Seattle/King County Public Health Dept.	
White Center	296-4646
Sexually Transmitted Disease Clinic	296-4620
WIC (Women, Infants & Children)	870-8190
WICS (Widow's Info & Consulting Service)	246-6142

**HOUSING**

Housing Authority (SW King County)	
Low Income Housing	762-3500
Housing Hotline (King County)	
Home Repair Loans	296-7640
Section 8 Housing (DSHS)	244-9552

**LEGAL**

Des Moines City Prosecutor	870-6515
Insurance Commissioner	1 800 562-6900
King County Bar Assoc. (referral & info)	623-2551
King County Prosecuting Attorney	296-9000
Victim assistance program	296-9025
Protection Orders	296-9547
Seattle Tenants Union	723-0500
Tenant Landlord Coalition Mediation Svcs.	283-1342

**LIBRARY**

Des Moines - 21620 11th Ave. S.	824-6066
---------------------------------	----------

**PARENTING**

Apple Parenting Program	248-8226
Family Services	461-3883
Parent Help Line	233-0139
Parent's Place/Highline Community College	878-3710
Parkside Family Center	433-2392
	or 433-2485

## PUBLIC SCHOOLS - ELEMENTARY

Des Moines 22001 9th Ave. S.	433-2541
Midway 22447 24th Ave. S.	433-2379
North Hill 19835 8th Ave. S.	433-2137
Olympic 615 S. 200th St.	433-2561
Parkside 2104 S. 247th St.	433-2485
Woodmont 26454 16th Ave. S.	839-9720

## PUBLIC SCHOOLS - MIDDLE

Pacific 22705 24th Place S.	433-2581
-----------------------------	----------

## PUBLIC SCHOOLS - SENIOR HIGH

Mt. Rainier 22450 19th S.	433-2441
---------------------------	----------

## RECREATION / YOUTH SERVICES

Big Brothers - South King County	246-3440
Boy Scouts/Chief Council Seattle	725-5200
Boys and Girls Clubs of King County	243-3487
Camp Fire Boys & Girls	854-3676
Des Moines Park & Recreation Department	870-6527
Girl Scouts	854-8358
Highline Community College	
Teen Program (Summer)	878-3710
Ruth Dykeman Youth & Family Services	243-5544

## SENIORS

AARP (American Assoc. of Retired Persons)	
(senior info and services)	526-7918
Daybreak (social, respite care)	248-4700
Friend to Friend Program	
(nursing home visitation)	246-5150
Des Moines Senior Center	
(hot lunch, social services, classes)	878-1642
Highline Community College Senior Education	878-3710
Meals on Wheels	878-1642
Medicare	1 800 372-6604
Puget Power (weatherization for 60+ years of age)	1 800 562-1482
Senior Community Service Employment	859-1818
Senior Information and Assistance	448-3110
Senior Rights Assistance	448-5720
	or 878-1642

## SERVICE ORGANIZATIONS

Kiwanis	878-8294
Lions Club	241-1785
Order of the Oddfellows	870-6333
Rotary	824-9185
Veterans of Foreign Wars	878-4303

## SHELTER / TEMPORARY HOUSING

Catherine Booth House (women's shelter)	324-4943
Community Information Line (9-5, M-F)	461-3200
Crisis Line	461-3222
DAWN (Domestic Abuse Women's Network)	656-7867
Des Moines Police Chaplain's Fund	878-3301

## SHELTER / TEMPORARY HOUSING (Cont'd)

New Beginnings Shelter (battered women)	522-9472
Salvation Army	946-7933
Seattle Emergency Housing Service	461-3660
South King County Multi Service Center	
(emergency housing)	838-6810
YWCA (emergency housing)	255-1201

## TRANSPORTATION

American Cancer Society	283-1152
Aviation Information	433-4645
Disabled Parking Permit Application	931-3935
Metro	
Route Information (24-hour)	553-3000
Customer Service, passes	553-3060
Reserve A Ride	1 800 201-8888
	or 971-5522
Senior Center Transportation	878-1642
Senior Services of Seattle/King County	448-5740
Traveler's Aid	461-3888
Washington State Ferries	464-6400

## VITAL STATISTICS

Birth Records	296-4769
Divorce Records	296-9300
Marriage Licenses	296-4021
Marriage Records	296-1595

## VOTER REGISTRATION

Des Moines Library	824-6066
King County Voter Registration Info	296-1600

We want to express our thanks and appreciation to those whose hard work went into the compilation of this directory, especially Nancy Uhrich, City of Des Moines Community Service Officer, and Rita Perkins, Des Moines Senior Center.





## LOOKING BACK



From "One Hundred Years of the Waterland Community"  
by Richard Kennedy and Grechen Schmidt

Many of Des Moines early settlers came from the Midwest to farm. Because so much of the land was covered with timber, it was necessary to log off the land first and to build mills. The soil proved to be quite rocky, showing glacial deposits, and not the best land for farming.

Some of the early settlers had small truck gardens, fruit orchards, and berry farms which supplied their neighbors. Produce was difficult to sell because it had to be hauled to the larger cities. It either had to go by ship or wagon over very rough roads.

Harry Latimer tells of being wrapped in a blanket and tucked under the wagon seat at 2 a.m. to go to Seattle with his father so the produce would be at the market early in the morning. It is also said that some women who boarded the boats to carry fowl to market would sit and pluck the chickens as they traveled, letting feathers blow all the way to Coleman Dock in Seattle!

A variety of marketable products were raised in the area. Chickens were raised by the Crimp family on 18th Ave. S. just north of S. 216th St. Popular berries raised were strawberries, loganberries, and blackberries. Other crops were tomatoes, apples, pears, and prunes.

Max Elsner began a florist business in Zenith in 1907. He continued until 1945 when he sold to Thys Napjus. In 1981 the business was sold to Lyn Frazier who operates it under the name "Zenith Holland Nursery". This is the oldest continuing business in the area. Originally, the greenhouse was located where the Masonic Home now stands.

A number of Japanese families also farmed in the Des Moines area. The Nishimura, Watanabe, Nakatsu, and several other families either farmed or had greenhouses, or leased them in this area. Mr. Mikami had a vegetable stand at Midway until World War II. This stand was taken over by the McNabb family.



The fertile fields of Des Moines east of the current site of Wesley Homes.

## S. 216th Street improvement project

For those who haven't already noticed, construction on S. 216th St. from 24th Ave. S. to the I-5 overpass is continuing.

The utility work by US West, TCI and Puget Power is nearing completion. This will allow R. W. Scott, the City's contractor, to continue with the street improvements. The project is scheduled to be completed in November of this year. Construction will continue on the present schedule, generally Monday through Friday, 7 a.m. to 5 p.m.

During the construction of the more visible street improvements (curbs, gutters, sidewalks and asphalt pavement), there will be some delays. One lane of traffic will be open at all times.

When completed, the most noticeable improvement will be continuous left turn lanes. These lanes will increase left turn safety and improve traffic flow. Non-motorized improvements include bike lanes and sidewalks on both sides of S. 216th St.

Also included in the project is the reconfiguration of the traffic signal at Pacific Highway South and undergrounding of some overhead utilities. The project is funded by the State's Transportation Improvement Board and the City of Des Moines.

## 31st Avenue S. sidewalk project

Construction on the 31st Avenue S. sidewalk project began in mid September. The project includes the installation of 600 feet of curbs, gutters and sidewalks along the east side of 31st Avenue S., south of S. 216th St. Ram, Inc., the City's contractor, expects to have the project completed by November. The first portion of the project, replacing a water line, was completed in August by the Highline Water District.

If you have any questions about these projects, please contact Jim Seitz with the City's Public Works Department at 870-6523.



# Clean Up

## City Offering Special Collection and Recycling Event on Saturday, Oct. 26

The City of Des Moines is sponsoring a special collection and recycling event to reduce the amount of hazardous material within the city. The event takes place **Saturday, Oct. 26**, 9 a.m. - 3 p.m. at the south end of the Des Moines Marina parking lot near Anthony's Home Port.

The event is funded primarily by the King County Local Hazardous Waste Management Program (LHWMP) and King County Solid Waste Division (KCSWD). Both the LHWMP and KCSWD programs are funded by garbage disposal fees paid by all King County residents. The City is using these funds to provide additional recycling and hazardous waste disposal opportunities to its residents. With these funds, the City is attempting to divert such hazardous materials such as used motor oil from being dumped down storm drains, old tires from being thrown into roadside ditches, used anti-freeze from being drained in alleyways, and lead acid batteries from being thrown into landfills. The event also collects hard to recycle materials such as bulky yard waste, clean scrap wood, ferrous and non-ferrous metals, reusable or recyclable household goods, and for a small fee, appliances.

For more details as to what can and cannot be brought to this special fall event, look for a flier in your mail soon or call City of Des Moines Community Development at 878-8626.

### You can bring the following items:

- **Uncontaminated Petroleum-based Products:** Oil filters, motor oil, brake fluid, transmission fluid, steering fluid, crankcase oil, kerosene, diesel oil and home heating fuel. Do not mix solvents or other substances with petroleum products.
- **Light Truck, Car, Motorcycle Tires:** Tires must be taken off rims, bias ply, steel belted, and studded tires accepted. Limit 8 passenger tires per household (18 inches and below) free of charge. \$8 for each large truck tire and \$14 for each tractor tire. (CASH ONLY).
- **Uncontaminated Antifreeze:** Do not mix with oil, gasoline, solvents, or other substances. No limit.
- **Lead Acid Batteries:** Car, truck, marine, and motorcycle batteries accepted. No household batteries, please.
- **Clean Scrap Wood.** No painted or stained wood, please.
- **Scrap Metal:** Both ferrous and non-ferrous metals.
- **Appliances:** To properly dispose of hazardous chemicals, there will be a \$15 charge for each refrigerator or freezer and \$20 for household air conditioners. (CASH ONLY).
- **Bulky Yard Waste:** Large branches are accepted. No brush, leaves or stumps.
- **Textiles & Reusable or Recyclable Household Goods:** Clothes that are too worn to be reused will be recycled into rags and useable/recyclable household items will be given to a non-profit organization and resold.



## Senior Center offers flu shots on Oct. 9

Though the flu season is January through March, fall is the time for flu immunizations. Mid-October to mid-November is the best time to receive a vaccination.

The Des Moines Senior Center staff encourages all seniors to receive the immunization with their doctor's approval. The Center will be offering the immunization again this year on Wednesday, October 9, from 9:30 to 11:30 am. This year's cost will be \$10 and no advanced sign-up is required.

The flu can have serious consequences in the elderly. According to the Centers for Disease Control, you should consider getting a shot if you are 65 years of age or older; you have a chronic condition such as diabetes, disease of the heart, lungs, or kidneys, severe anemia or conditions causing lowered resistance to infection; you are in close contact with high risk persons; or you have a strong desire to avoid influenza infection or reduce the severity of the disease.

Clients with Medicare Part B (other than Group Health) can be reimbursed a significant portion of the shot cost. Volunteers will be available to assist with completion of forms.

If you have any questions, call the Center at 878-1642 or stop by at 22030 Cliff Ave. S.

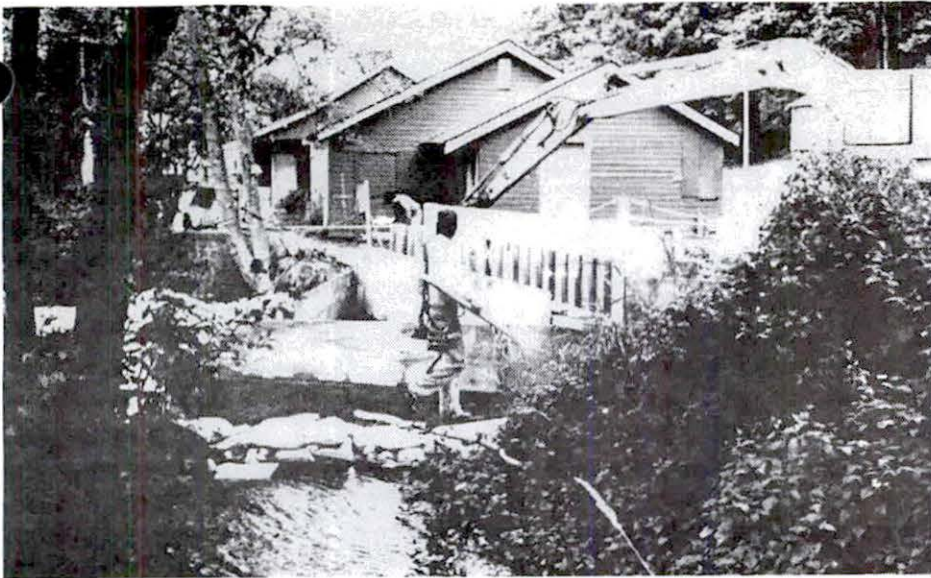
### Hazardous Wastemobile

If you miss the Collection and Recycling Event on Oct. 26, you can still get rid of unwanted hazardous substances at King County's Household Hazardous Waste Wastemobile, which will be in South King County this fall at the following locations:

**Federal Way** (SeaTac Mall Sears)  
Oct. 31, Nov. 1, 2 & 7, 8, 9

**Kent Park and Ride** (Lincoln & James)  
Dec. 5, 6, 7 & 12, 13, 14

**HOURS:** Thurs. & Fri. noon - 7 p.m.  
Saturday 10 a.m. - 5 p.m.



A 20-foot wide concrete bridge is replacing the old timber bridge.

## Beach Park bridge project being completed

Construction of the new bridge that crosses Des Moines Creek just upstream from the Des Moines Beach Park Senior Center started the day after Labor Day and will continue until October 17.

Reopening of the bridge is scheduled for the end of September with only minor work remaining for October. The existing timber bridge has been damaged by large storms over the last several years. Bridge railing and approaches were destroyed in a 1990 storm, and a storm last February caused one end of the bridge to settle over 3 inches and the abutment supporting the bridge deck to tilt inward. This further confined the stream making the bridge even more prone to future damage.

The timber bridge, which is 14 feet wide and has a span of 11 feet, is being replaced with a new 72,000 pound

capacity concrete bridge that is 20 feet wide and will have a span of 20 feet. Although the driving width of the bridge will remain the same, the extra width will accommodate a 5-foot sidewalk on one side of the bridge to enhance pedestrian and vehicle safety. In addition, the height of the bridge will be increased by more than 1-1/2 feet, which will increase the stream flow capacity under the bridge by more than 350%. The new bridge will also include hand rails, curbs, and handicap access ramps on the bridge approaches.

In addition to the bridge, a spillway is being constructed downstream to convey some of the peak storm flows away from and around the Senior Center. Last year, a major storm severely damaged the foundation and utilities of the Dining Hall portion of the Center.

## Construction of Des Moines Creek trail planned

Construction begins next summer on the Des Moines Creek Trail project, which will run from South 200th Street to where the creek empties into Puget Sound at Des Moines Beach Park.

The first phase of the trail starts at 200th Street near Tyee Valley Golf Course and travels approximately 1.4 miles to the Midway Sewer District Treatment Plant. That segment is projected to open in October 1997.

The second phase travels another 4,300 feet and completes the trail from the treatment plant to Puget Sound. It is scheduled for completion in fall 1999.

The trail will be constructed following installation of a Midway Sewer District sewer line installation along the same corridor.

The asphalt trail for pedestrians and bicyclists will be 12 feet in width and will be on a "bench" 5 to 15 feet above the stream bed.

Two resting spots with natural seating areas and signage will be sited along the Phase One portion of the trail. Although some trees and shrubs will need to be removed, most existing vegetation will be maintained. Cautionary signage will be placed at key points where the trail narrows and curves reduce visibility.

The trail project is being funded through money from the Washington State Department of Transportation (ISTEA) and the 1989 King County Open Space budget. The project also requires tunneling through the fill where Des Moines Memorial Drive crosses Des Moines Creek. Funding for this project will be through interlocal agreements involving a number of jurisdictions.

## NW Waste Information Expo October 29 & 30

Attention Des Moines business owners/managers.

Attend the 8th Annual Northwest Waste Information Expo and learn how to reduce your waste, prevent pollution, and close the recycling loop by purchasing products made from recycled materials. The event will be held this October 29 & 30th at the Seattle Center

Exhibition Hall and is sponsored by the Puget Sound Waste Information Network (WIN). The Expo showcases solutions with 45 technical seminars, along with numerous vendors that will guide you to products and services for your particular business needs.

For more information, call (206) 767-3271.



## CITY COUNCIL HIGHLIGHTS



Scott Thomasson  
*Mayor*



Terry Brazil  
*Mayor Pro Tem*



Bruce Roberts  
*Council member*



Robert Sheckler  
*Council member*



Dan Sherman  
*Council member*



Gary Towe  
*Council member*



Don Wasson  
*Council member*

### COUNCIL HIGHLIGHTS, THIRD QUARTER 1996

■ Authorized a preliminary design study for possible expansion of the City Administration facilities, replacing the existing Police Station, and adding office space to the existing courtyard.

■ Began detailed review of the City Park and Recreation Plan, the Marina Master Plan

and the 1997-2002 Capital Improvement Plan.

■ Approved acceptance of a Domestic Violence Grant from the U.S. Department of Justice in the amount of \$177,537.59 to provide a safe, supportive environment for victims to access police protection and agency advocacy resources.

■ Adopted the City's 6-Year Transportation Plan for the years 1997-2002.

■ Approved the Woodmont/Redondo Annexation effective January 1, 1997.

### UPCOMING FOURTH QUARTER EVENTS

- City Council 1997 Budget Review and Adoption
- City Council Review of Comprehensive Plan Admendments
- City Council Adoption of Comprehensive Plan and Zoning for Redondo
- City Council Adoption of Zoning for Woodmont

CITY OF DES MOINES  
21630 11th Avenue South  
Des Moines, WA 98198

BULK RATE  
US POSTAGE PAID  
SEATTLE WA  
PERMIT NO. 1123

ECRWSS  
POSTAL CUSTOMER